

HYPERjection Training Materials

Non-Invasive Air Injection System

FACE · BODY

Ver. 2055 | Training materials. For internal use only.



Introduction

What is **HYP**ERjection?

Hyperjection is a non-invasive solution-delivery device that uses solenoid technology & high-pressure air to deliver active ingredients deep into the skin—completely needle-free.



Precise air-pressure control enables **uniform, needle-free delivery of active ingredients** deep into the skin

Operation principle

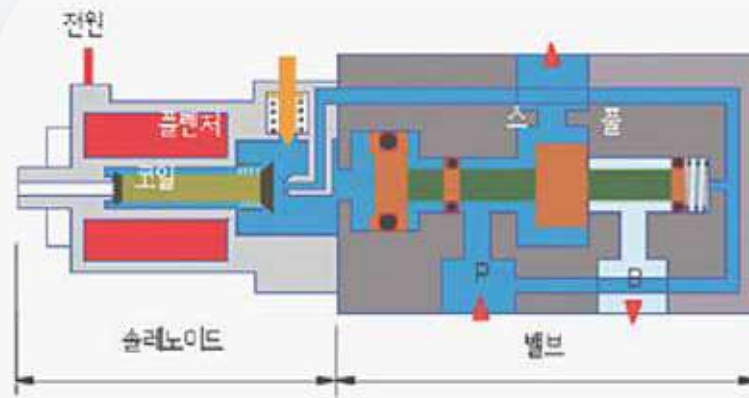
Solenoid-based mechanism

The solenoid mechanism uses electrical signals to precisely control a valve and produce an instantaneous high-pressure air pulse, enabling rapid and accurate injection of ampoules into the skin.

Pulsed injection

Stable force

Adjustable intensity



Robust durability

Deep penetration

Quick & Safe

*The above image explains the principle of the solenoid valve.

Key points

With advanced skincare — applying method should be too

Needle Free

Key benefits of using Hyperjection



Maximized absorption

Solenoid-based mechanism injects a solution deep into the skin, maximizing absorption



Minimalized pain & side effects

The delivery utilizes high-pressure pneumatic injection without needles, significantly reducing the risk of pain, bruising, bleeding, and edema.



Short downtime

The procedure does not involve incisions or damage to the skin tissue, allowing patients to resume daily activities immediately.



Sterile procedure

Disposable air syringes provides sterile & safe procedures



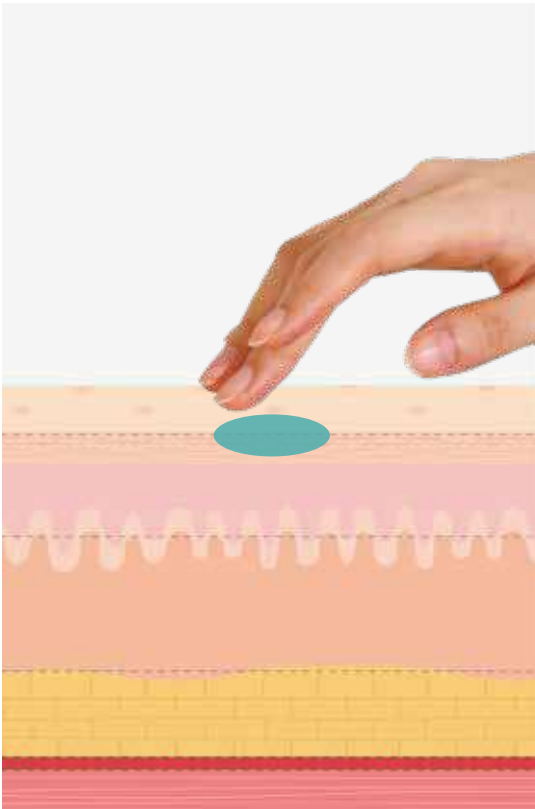
Quality assurance

By maintaining consistent pressure and dosage, the system reduces operator variability and ensures reliable, consistent treatment outcomes.

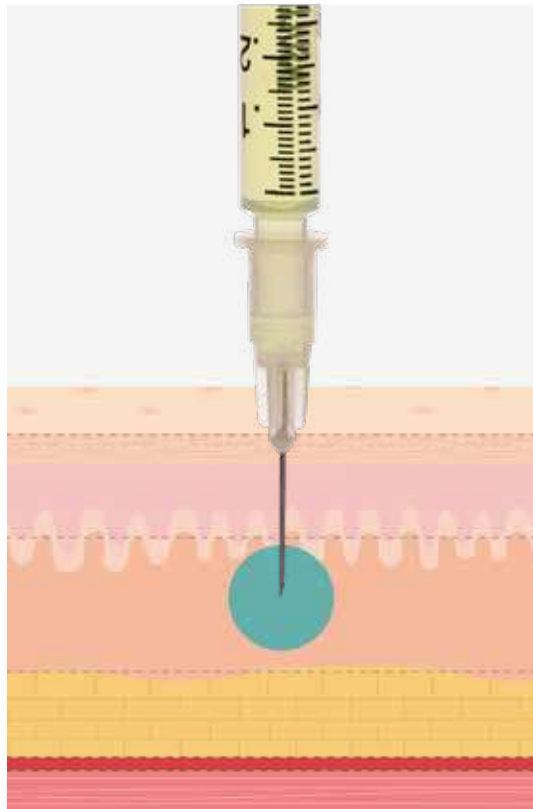
The Importance

Comparison by Types of Skin Absorption

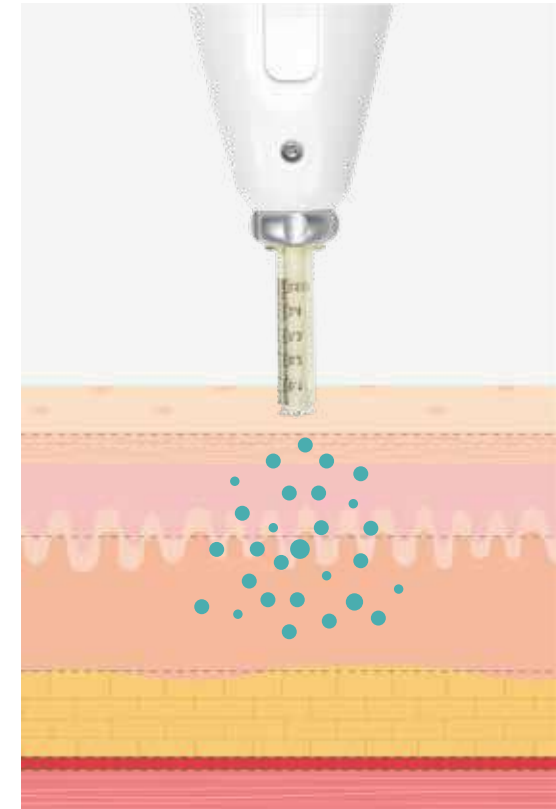
Hand Application
(Percutaneous Absorption)



Injection
(Plastic Surgery / Dermatology)



Non-invasive injection
(Hyperjection)



The Importance

Comparison by Types of Skin Absorption

No-needles injection (Hyperjection)

Painless or low-pain application,
high absorption efficiency,
quick recovery

Embossing, minor marks,
irritation (on high levels)

Epidermis~dermis

Low to moderate
(alternative to clinical treatments)

Low

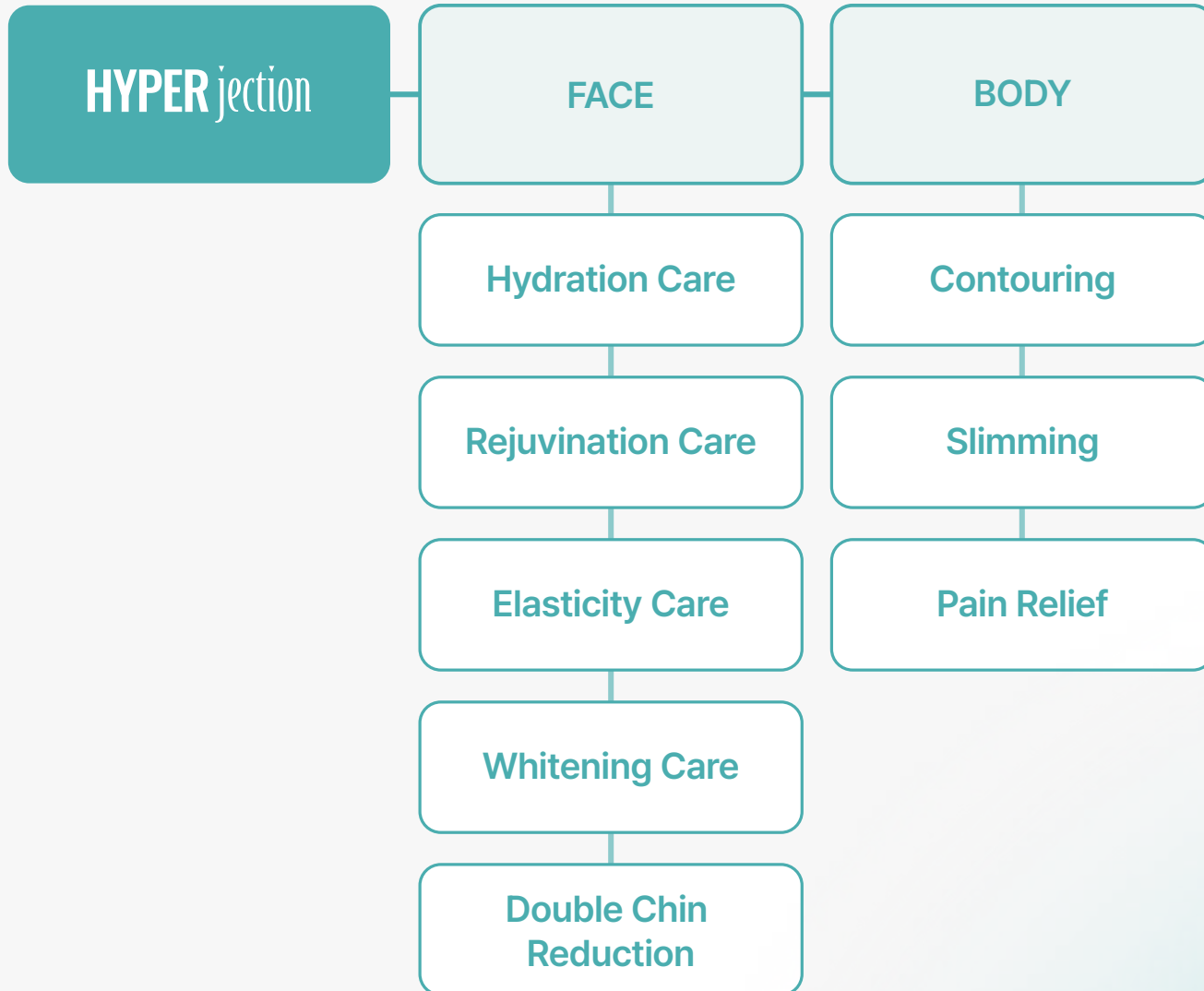
Medium
(Cosmetology use)

Almost none
(May last 2-4 days after
high-levels treatment)

	Hand-applied (transdermal)	Needle-injected (Clinics)
Advantages	Painless, User-friendly	High-efficiency delivery, immediate effect
Limitations	Very low absorption rate (Around 3%)	Pain, bruising, risk of infection, long downtime
Impact depth	Epidermis	Beyond the dermis
Pain level	For all ages and skin types	High
Ampoule loss	High	Low
Difficulty	None (Self-use friendly)	High (Medical license required)
Downtime	None	1~14 days (Depending on treatment area)

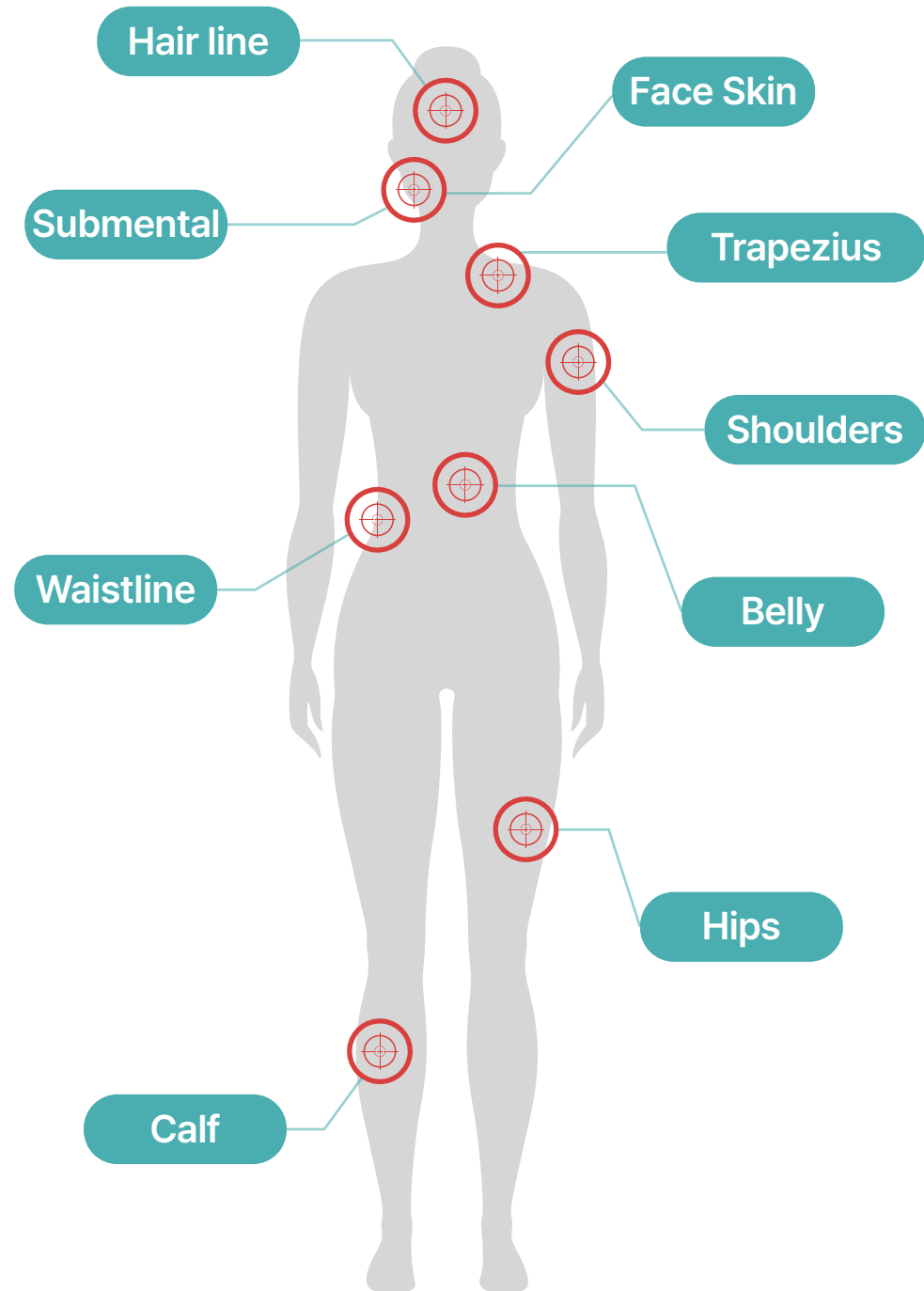
How you can do it

Expandability of service programs



Try it here!

Hyperjection Targeted areas



Please be aware of these points when performing Hyperjection procedures.

Procedures Common Guides and Precautions

1. Make sure to use a sterile, dedicated ampoule and disposable air cylinder.

2. Injection amount per air cylinder: 0.5 cc (0.5 ml)

3. Number of shots per air cylinder: 40 to 100 shots (depending on the set pressure strength)

4. Recommended Strength: Face 1-4 / Body 1-3 (Different pain sensitivity and fat distribution by customer, customizable in addition to recommended strength)

5. Embo marks and blood marks may occur after body procedures, but they will be relieved between 1 and 2 days.

6. When performing procedures on areas where the bones touches, rounded areas, or areas with low fat, the air cylinder may shake momentarily due to air pressure and may not be adhered to. In this case, take the shot with the operator's hand next to the area where the air cylinder touches the skin.

7. Immediately after the procedure, serum, cream, sunscreen, etc. can be used immediately, and soothing management is recommended through device management such as water droplet management. However, sunscreen must be used when going out, and it is recommended to refrain from exercising, drinking, and smoking intensely for 24 to 48 hours after the procedure.

Before & After

Pre and post-hyperjection clinical comparison



BEFORE



AFTER

One-time treatment: Improve contour line, skin glow, and complexion.



BLUE SOLUTIONS
MEDICAL KOREA

Thank You!

10, Jeongseojin 4-ro, Seo-gu,
Incheon, Republic of Korea 22850

+82 10-8760-9812

success@bluesolutions.co.kr

www.bluesolutions.co.kr

